

# ORDERING INFORMATION



B-33, Electronic Estate, GIDC,  
Sector-25, Gandhinagar,  
Gujarat- 382025.

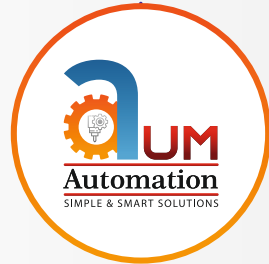
**SCAN TO GET  
LOCATION**



## Series: N1

### DRIVE TYPE

- BSD116** : Ball Screw Rail Closed
- LSA60** : Ball Screw Rail Open
- LSC16** : Ball Screw Shaft Open
- IND1615** : Ball Screw Rail Closed
- IND2020** : Ball screw Rail Closed
- INBL** : Belt Axis



### SENSOR

- PNP** : PNP Sensor
- NPN** : NPN Sensor
- 8P** : 8mm PNP Sensor
- 8N** : 8mm NPN Sensor
- 12P** : 12mm PNP Sensor
- 12N** : 12mm NPN Sensor
- N** : Without Sensor

### LEAD

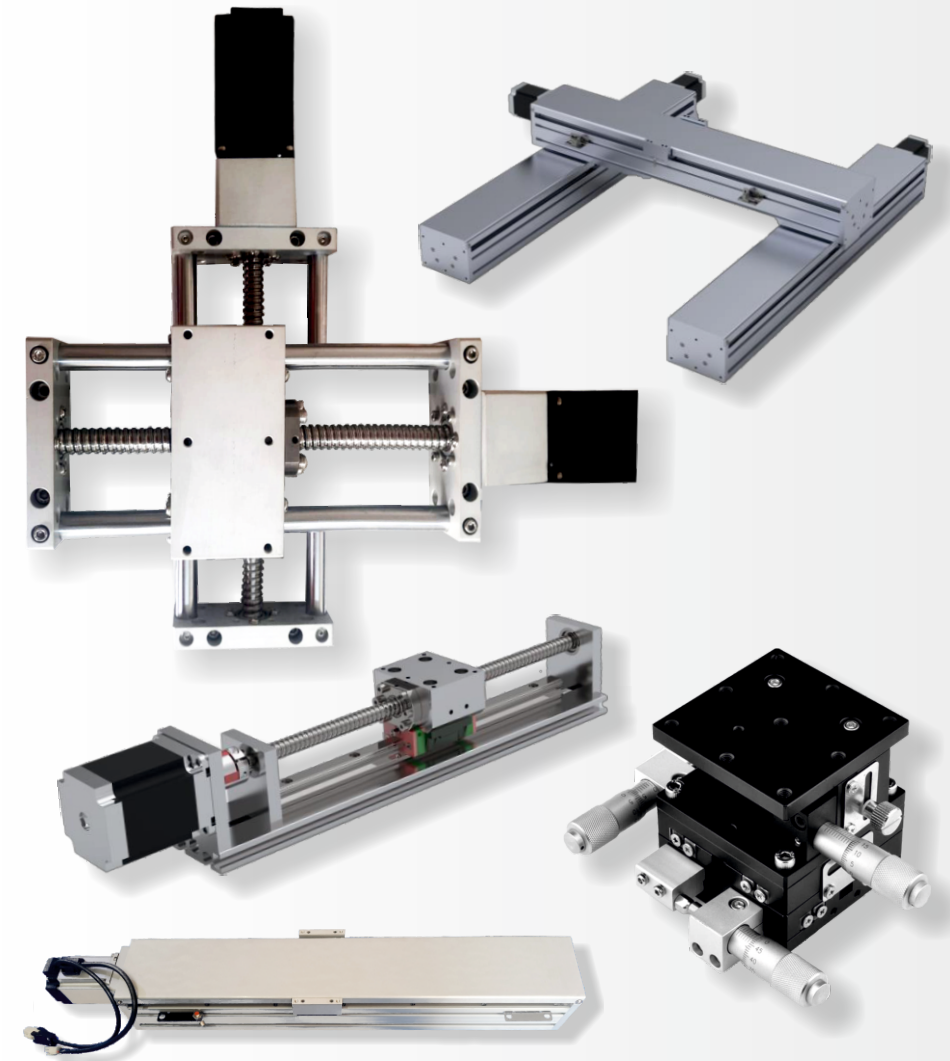
- 05** : 5 mm
- 10** : 10 mm
- 16** : 16 mm
- 20** : 20mm

### STROKE

- 50** : 50 mm
- 100** : 100 mm
- 200** : 200 mm
- 300** : 300 mm

### MOTOR

- ST1** : 57AUM13 / Nema 23
- ST2** : 57AUM24 / Nema 23
- ST3** : 57AUM30 / Nema 23
- ST4** : 86AUM85 / Nema 34
- SE1** : 100W Servo
- SE2** : 200W Servo
- SE4** : 400W Servo
- SE7** : 750W Servo
- S00** : Without Motor
- HW** : Handwheel
- HWL** : Handwheel lock



### EXAMPLE

**BSD116** - **05** - **300** - **ST3** - **8P**

▶ Introducing  
**N1 SERIES LINEAR AXIS**

nishant@aumautomation.in  
aumautomation1@gmail.com

+91 95 123 123 00

www.aumautomation.in  
www.aumautomations.com

▶ Sell Anywhere in the World But  
Manufacture in **INDIA**

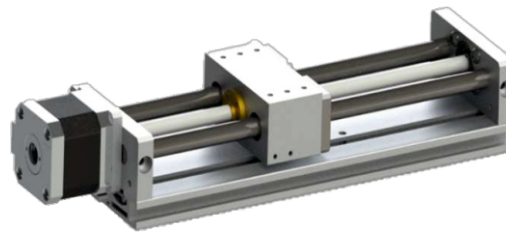


### BSD116



TECHNICAL SPECIFICATIONS	
SIZE (mm)	134 X 90
TOTTAL LENGTH (mm)	Stroke + 251
SLIDER LENGTH (mm)	70
BALL SCREW SIZE (mm)	φ 16 X 05 / φ 16 X 10
MAX HORIZONTAL LOAD (kg)	10
MAX VERTICLE LOAD (kg)	6

### LSC80



TECHNICAL SPECIFICATIONS	
SIZE (mm)	120 X 58
TOTTAL LENGTH (mm)	Stroke + 127
SLIDER LENGTH (mm)	35
BALL SCREW SIZE (mm)	φ 08 X 02 / φ 08 X 04
MAX HORIZONTAL LOAD (kg)	2
MAX VERTICLE LOAD (kg)	1

### MOTOR



### LSA60



TECHNICAL SPECIFICATIONS	
SIZE (mm)	60 X 89
TOTTAL LENGTH (mm)	Stroke + 203
SLIDER LENGTH (mm)	62
BALL SCREW SIZE (mm)	φ 16 X 05 / φ 16 X 10
MAX HORIZONTAL LOAD (kg)	8
MAX VERTICLE LOAD (kg)	5

### IND1615



TECHNICAL SPECIFICATIONS	
SIZE (mm)	180 X 85
TOTTAL LENGTH (mm)	Stroke + 248
SLIDER LENGTH (mm)	120
BALL SCREW SIZE (mm)	φ 16 X 05 / φ 16 X 10
MAX HORIZONTAL LOAD (kg)	30
MAX VERTICLE LOAD (kg)	15

### ALUMINIUM PROFILE



### LSC16



TECHNICAL SPECIFICATIONS	
SIZE (mm)	120 x 58
TOTTAL LENGTH (mm)	Stroke + 178
SLIDER LENGTH (mm)	70
BALL SCREW SIZE (mm)	φ 16 X 05 / φ 16 X 10
MAX HORIZONTAL LOAD (kg)	6
MAX VERTICLE LOAD (kg)	3

### IND2020

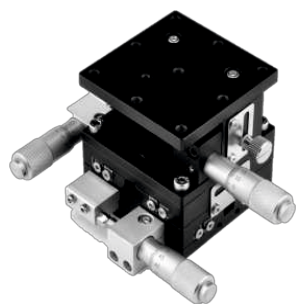


TECHNICAL SPECIFICATIONS	
SIZE (mm)	180 X 109
TOTTAL LENGTH (mm)	Stroke + 345
SLIDER LENGTH (mm)	160
BALL SCREW SIZE (mm)	φ 20 X 05 / φ 20 X 10
MAX HORIZONTAL LOAD (kg)	50
MAX VERTICLE LOAD (kg)	25

### ASSEMBLY

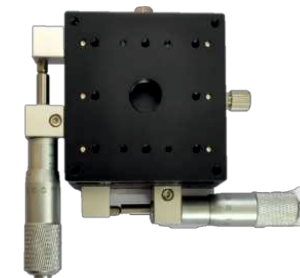


### AUM6060



TECHNICAL SPECIFICATIONS	
X AXIS TRAVEL	MATERIAL
+/- 6.5 mm (13mm)	Aluminium Anodize
Y AXIS TRAVEL	MIN SCALE
+/- 6.5 mm (13mm)	0.01 mm
Z AXIS TRAVEL	ACCURACY
10 mm	0.03 mm
TABLE SIZE	PARALLELISM
60*60 mm(2.36 inch)	0.03 mm
MOVING DIRECTION	NET WEIGHT
X, Y, Z Axis	0.75 Kg
LOAD	
24.5N(3kgf)	

### AUM8080



TECHNICAL SPECIFICATIONS	
X AXIS TRAVEL	MATERIAL
+/- 12.5 mm(25mm)	Aluminium Anodize
Y AXIS TRAVEL	MIN SCALE
+/- 12.5 mm(25mm)	0.01 mm
TABLE SIZE	ACCURACY
80*80mm	0.03 mm
MOVING DIRECTION	PARALLELISM
X & Y Axis	0.03 mm
LOAD	NET WEIGHT
24.5N(3kgf)	0.8 kg

### BELT AXIS

